

# MUNTZ 888 ESD BLOWVAC

---



- *ESD Safety*
- *Powerful performance*
- *Advanced multi-stage HEPA filtration*
- *Blower function*
- *High-capacity filter bag*
- *Thermal overload protection*
- *Extensive optional accessories*
- *Electronic control (\*optional)*

The Muntz 888 ESD BLOWVAC series is specifically designed for the cleaning of more expansive surfaces in ESD protected area's (EPA's), making it perfect for efficient floor cleaning in cleanrooms. This vacuum cleaner offers significant suction power, advanced multi-stage HEPA filtration and a large capacity filterbag, ensuring extensive coverage.

# Technical specifications

---

Voltage	220-240V 50/60 Hz 120V, 100V 50/60 Hz
Power	1000W (±10%)
Housing material	PP
Typical bleeder resistance	$10^7 - 10^9$ Ohm
ESD Safety	IEC 61340-5-1 Compliant
Max. suction power	210 mbar
Max. airflow	45 l/s
Max. noise level	64 dB
Weight	6 kg
Dimensions	39 x 34 x 42.5 cm
Hose diameter	32 mm
Detachable power cord	C13 – Schuko/UK
Filter bag capacity	12 l

## Scope of delivery

---

- 888 ESD Blowvac
- 10 m power cord
- 100 cm stretch hose (ratio 3:1)
- HEPA motorfilter + HEPA Exit filter
- Meltblown filterbag
- 3-piece extension tubes + bent handle
- Large wheeled brush floor nozzle
- Rubber nozzle
- D-Shape brush nozzle (medium)
- Crevice nozzle

# MUNTZ 888 ESD Accessories



**5X**

## **MT-850**

Meltblown filterbagset (5 pcs)



**10X**

## **MT-851**

Meltblown filterbagset (10 pcs)



## **MT-852**

Activated carbon jacket



## **MT-853**

HEPA Motorfilter



## **MT-857 ESD**

HEPA air-exit filter



## **MT-888 ISO 7 KIT**

MT-851 + MT-853 + MT-857 ESD



## **MT-861 ESD**

Original replacement hose assembly (1m)



## **MT-862 ESD**

Super stretch hose assembly (2m)



## **MT-863 ESD**

Two-part blow assembly + alu connector (1m)



## **MT-864 ESD**

Two-part super stretch blow assembly + alu connector (2m)

# MUNTZ 555/888 ESD Accessories



**PHU-04 ESD**  
Mini brush/nozzle set



**PHU-05 ESD**  
Long thin rubber nozzle



**PHU-07 MB ESD**  
Mini-brushes (pair, soft)



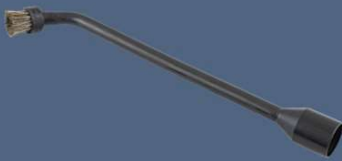
**PHU-08 MB ESD**  
Mini-brushes (pair, medium)



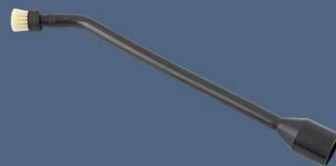
**PHU-09 MB ESD**  
Mini-brushes (pair, hard)



**PHU-07 ESD**  
Soft rubber nozzle c/w  
brush head (hard)



**PHU-08 ESD**  
Soft rubber nozzle c/w  
brush head (medium)



**PHU-09 ESD**  
Soft rubber nozzle c/w  
brush head (soft)



**PHU-10**  
Mini brush/nozzle set  
*(NON-ESD!)*



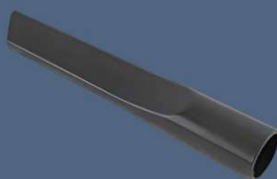
**PHU-11 ESD**  
D-Shape brush nozzle (hard)



**PHU-12 ESD**  
D-Shape brush nozzle (medium)



**PHU-13 ESD**  
D-Shape brush nozzle (soft)



**PHU-16 ESD**  
Crevice nozzle



**PHU-17 ESD**  
Angle adaptor



**PHU-18 ESD**  
Extension hose assembly (1 m)



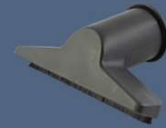
**PHU-19 ESD**

Soft rubber nozzle + mini crevice



**PHU-20 ESD**

Thick rubber nozzle



**PHU-22 ESD**

Small upholstery nozzle



**PHU-23 ESD**

Large alu upholstery nozzle



**PHU-27 ESD**

Large wheeled brush floor nozzle



**PHU-28 ESD**

3-piece set extension tubes



**PHU-28.1 ESD**

Bent handle with adjustable vent



**3m CORDSET**

Cordset Schuko/UK



**10m CORDSET**

Cordset Schuko/UK