

## EPA/CR BlowVac Special

## MUNTZ 888-ESD-S GS

TRULY VERSATILE EPA VACUUM CLEANER / BLOWER WITH ADVANCED CLEANROOM HI-FILTRATION SYSTEM FOR FACTORY CONTRACT CLEANING AND HARD TO REACH DUST & DEBRIS FROM ESD SENSITIVE ELECTRONIC EQUIPMENT, ASSEMBLY LINES, R&D AREA'S AND IN FIELD-SERVICE.

- ✓ CONTROLLED SOFT (SR : 10E7 - 10E8 OHMS/SQ.) ESD-SAFE STATIC DISCHARGE FROM HOUSING AND VACUUM NOZZLES TO EARTH POWER OUTLET.
- ✓ EPA COMPLIANT TO IEC 61340-5-1
- ✓ EEC MADE TOP QUALITY ELECTRICAL & ELECTRONIC COMPONENTS FOR UTMOST RELIABILITY AND GLOBAL USE.
- ✓ UNIT OVERHEATING PROTECTED & RFI/EMC FILTER EQUIPPED.
- ✓ EASY TO MOVE AROUND THANKS TO LOW MOTOR MOUNT, WHEEL WELL PROTECTED CASTOR AND ROBUST REAR WHEELS.
- ✓ 10 METERS DETACHABLE SCHUKO OR FUSED UK PLUG CORD-SET. 15 METERS ACTION RANGE.
- ✓ LIFT OFF WING SHAPED QUICK STORAGE CORDSET HOLDER.

- ✓ EPA HOSE ASSEMBLY EXTENDING FULL 3 METERS !
- ✓ METAL BEND HANDLE C/W AIR REGULATOR, STEEL MINI EXTENSION TUBE SET AND WHEELED FLOOR/BRUSH TOOL FOR FLOORS, WALLS AND CEILINGS.
- ✓ CREVICE NOZZLE, FLEXIBLE RUBBER NOZZLE AND D-SHAPE BRUSH NOZZLE FOR DETAILED CLEANING.
- ✓ 12 L FILTERBAG CAPACITY. UNIT AVAILABLE IN TWO CLEANROOM ISO 14644-1 FILTER SET-UP'S.
- ✓ OVERSIZED MOTORFILTER ENSURES STEADY AIR-FLOW EXTENDING BOTH MOTOR & FILTER LIFE. ELIMINATES PREMATURE CLOGGING.
- ✓ OPTIONAL BLOW ASSEMBLIES TURN UNIT INTO A VERY POWERFUL BLOWER. A GREAT ALTERNATIVE TO COMPRESSED OR COSTLY CANNED AIR (GAS DUSTERS).
- ✓ 100V & 120V VERSIONS AVAILABLE.

MAX. MOTOR POWER : 1100W 50/60 hz  
 MAX. VACUUM POWER : 210 mbar  
 MAX. AIRFLOW : 45 L/Sec  
 NOISE LEVEL : 64 db



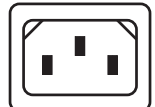
MEASUREMENTS : 39 x 34 x 42,5 CM (LxWxH). WEIGHT : 6 KG (APPLIANCE)

### ISO 7

MT-853	HEPA H14*						
MICROMOTORFILTER (INSIDE)							
MT-857	HEPA H14*						
EXTERNAL AIR EXIT FILTER							
9	9	9	9	0	0	3	µ

### ISO 4

MT-853	HEPA H14*						
MICROMOTORFILTER (INSIDE)							
MT-858	ULPA U15*						
EXTERNAL AIR EXIT FILTER							
9	9	9	9	0	0	3	µ
9	9	9	9	7	0	3	µ



### FILTER CONFIGURATIONS (FILTER SET-UP'S) AVAILABLE :

#### ISO 7 (CLASS 10.000)

GERMAN "M" CLASS MELTBLOWN FILTERBAG MT-850/MT-851 + HEPA H14 MOTORFILTER MT-853 + HEPA H14 MT-857 EXIT FILTER

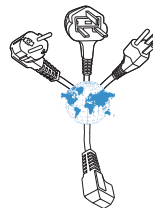
#### ISO 4 (CLASS 10)

GERMAN "M" CLASS MELTBLOWN FILTERBAG MT-850/MT-851 + HEPA H14 MOTORFILTER MT-853 + ULPA U15 MT-858 EXIT FILTER

## EPA/CR BlowVac Special Electronic (Silent version)

## MUNTZ 888-ESD-S-E GS

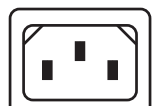
- ✓ ADDED NOISE ABSORBING MATERIALS.
- ✓ FULL ELECTRONIC STEPLESS CONTROL OF :
  - MOTOR SPEED
  - ELECTRIC CONSUMPTION
  - VACUUM POWER
  - BLOW POWER
  - NOISE LEVEL



MEASUREMENTS : 39 x 34 x 42,5 CM (LxWxH). WEIGHT : 6 KG (APPLIANCE)

MT-853	HEPA H14*						
MICROMOTORFILTER (INSIDE)							
MT-857	HEPA H14*						
EXTERNAL AIR EXIT FILTER							
9	9	9	9	0	0	3	µ

MT-853	HEPA H14*						
MICROMOTORFILTER (INSIDE)							
MT-858	ULPA U15*						
EXTERNAL AIR EXIT FILTER							
9	9	9	9	0	0	3	µ
9	9	9	9	7	0	3	µ



MELTBLOWN = Fine weave HEPA-like synthetic microfiber filtermedia.  
 HEPA = High Efficiency Particulate Air. Retention down to 99,990% on 0,3 µ particles.  
 ULPA = Ultra Low Penetration Air. Retention down to 99,997% on 0,3 µ particles.

IEC 61340-5-1 = EPA = Electrostatic Protected Area, solely permitting use totally ESD safe materials and production aids to fully protect ESD sensitive electronics against harmful electrostatic discharges.



MUNTZ TECHNICS BV RESERVES THE RIGHT TO CHANGE, ALTER OR MODIFY ITS APPLIANCES, REPLACEMENT PARTS, ACCESSORIES, OR THEIR PACKAGING, WITHOUT PRIOR NOTICE, EXCEPTING THOSE WITHIN SPECIFIC SUPPLY CONTRACT ARRANGEMENTS.

Manufactured in The Netherlands to European Community Standards No. 2006/95/EC & 2004/108/EC

Fabrique en Pays-Bas conformement aux normes de la communauté Européenne 2006/95/CEE & 2004/108/CEE.

Hergestellt in Holland nach normen der EG 2006/95/EWG & 2004/108/EWG.

Fabricado en Holanda de conformidad con las normas comunitarias Europeas 2006/95/CEE y 2004/108/CEE.

# << LABEM >>

LABEM S.C. ul. Tyniecka 50/2, 02-621 Warszawa  
 tel.: +48 22 646 27 99 email: biuro@labem.pl  
 www.labem.pl www.weller.com.pl

**ACCESSORIES 888 GS EPA/ICR BLOWVAC SERIES**

**FILTER GUIDE  
(NO LIQUIDS I)**

Meltblown (fleece). High level filtration, yet maintains suction power & airflow. Ideal for humidity controlled CR use as permits pick-up moist air and dust.

Activated carbon. Neutralises majority smells & odours. Arrests moist from air.

HEPA = High Efficiency Particulate Air. 99.990% retention on 0.3 µ particles.

ULPA = Ultra Low Penetration Air. 99.997% retention on 0.3 µ particles.

**MT-850**



Disposable Meltblown filterbag set

**MT-851**



Disposable Meltblown filterbag set

**MT-852**



Activated carbon jacket (MT-753 use)

**MT-853**



HEPA Motorfilter (placed before motor)

**MT-857 ESD**

**HEPA**



Exit filter (placed after motor)

**MT-858 ESD**

**ULPA**



Exit filter (placed after motor)

**MT-888 ISO 7**

**KIT**



1 x MT-851 + MT-853 + MT-857

**MT-888 ISO 4**

**KIT**



1 x MT-851 + MT-853 + MT-858

**MT-861 ESD**

Relaxed = 0.9 m  
Extended = 3 m



Original hose assy complete

**MT-862 ESD**

Relaxed = 2.5 m  
Extended = 8.5 m



Super stretch hose assy complete

**MT-863 ESD**

Relaxed = 1.2 m  
Extended = 3 m



Blow assembly + connector

**MT-864 ESD**

Relaxed = 2.8 m  
Extended = 9.1 m

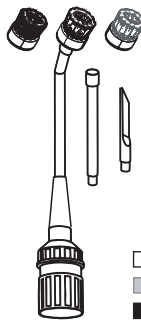


Blow assembly + connector (long version)

**BRUSH GUIDE**

Brush hardness : ■ MEDIUM/HARD  
■ MEDIUM  
□ VERY SOFT  
(indicative)

**PHU-04 ESD**



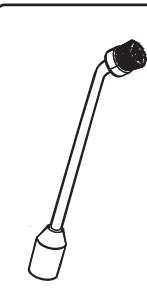
Mini attachment set

**PHU-05 ESD**



Long soft rubber nozzle

- PHU-07 ESD
- PHU-08 ESD
- PHU-09 ESD



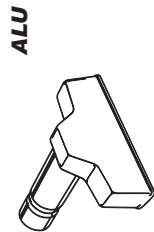
PHU-05 ESD c/w brush head

**PHU-22 ESD**



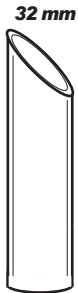
Small moulded upholstery nozzle

**PHU-23 ESD**



ALU  
Large aluminium upholstery nozzle

**PHU-26 ESD**



32 mm  
Soft rubber bulk pick up nozzle  
L = 150 mm. IID = 32 mm.

**PHU-27 ESD**



Wheeled swivel action floor nozzle with strip brushes. Width 330 mm.

**PHU-27 ESD**



ALU  
Swivel action alu floor nozzle with removable brush. Width 330 mm.

**PHU-28 ESD**



Fully (both in- and outside) electroplated steel  
Special mini extension rod set (3 x rod)

- PHU-11 ESD
- PHU-12 ESD
- PHU-13 ESD



D-Shape brush nozzle

**PHU-15 ESD**

Round brush nozzle. Conductive monofilament tufted.

**PHU-16 ESD**



Crevice nozzle

**PHU-19 ESD**



Modified PHU-05 ESD c/w mini crevice nozzle

**PHU-20 ESD**



Long soft rubber nozzle

